

## Apparel Management System

- **Marketing and Sales**
  - Initial Cost
  - Order Follow up
  - Style Follow Up
- **Planning**
  - Material Resource Planning
  - Time Planning
- **Purchasing**
- **Inventory Control**
- **Manufacturing Follow Up (Before Cutting)**
  - Knitting
  - Dyeing-Printing and etc.
- **Cutting**
- **Manufacturing Follow up (After Cutting)**
  - Piece printing, Embroidery, Sewing, Last Ironing etc.
- **Shipment**
- **Cost**
- **Current Account**
- **Report Generator**
- **Form Generator**
- **Integration**

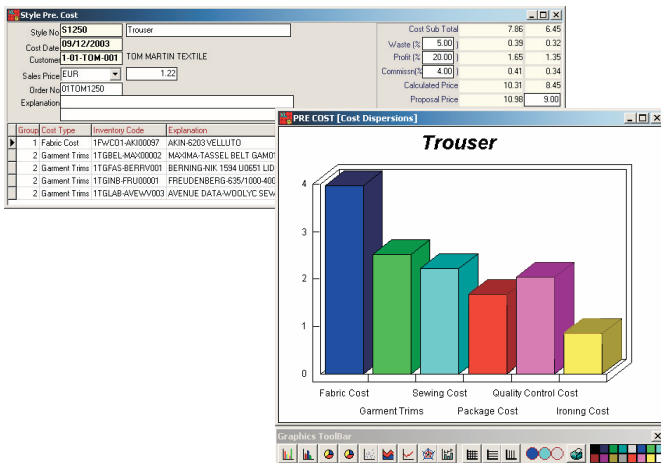


## Marketing and Sales

### Initial Cost

It is possible to calculate a reliable initial cost for the styles that either you prepared or your customer provided by defining waste, profit and commission rates.

These calculated costs can be archived based on the styles, dates and customers, and by means of the filters, you can access to these archived costs easily.



It is quicker to calculate a new cost with the copy method by pasting from a previously prepared initial styles cost card.

Detailed fabric table and unit fabric cost can be calculated on the basis of the yarn used.

You may execute automatic profit analysis and obtain fabric formation details at the initial style cost tables.

Costs can be displayed in different foreign exchange types.

EXAMPLE COMPANY 2 January 2004 Friday 14:22:17 Page: 1

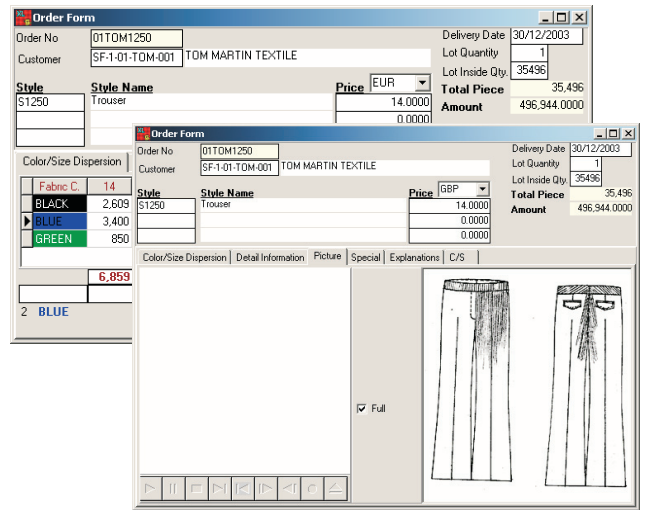
**COST TABLE**

STYLE S1205 SHIRT  
CUSTOMER SF-1-01-TOM-001 TOM MARTIN TEXTILE  
ORDER COST DATE 09/12/2003  
REMARK

COST TYPE / USED MATERIAL	UNIT PRICE	F. Exc. Price	F. Exc.	Usage Qty.	Unit	Loss %	AMOUNT	EUR Amount
<b>FABRIC</b>			EUR					
1FWCO1-AK00097 - AKIN-6203 VELLUTO	3,7820	3,1000	EUR	1,26	Meter	5,00	4,7653	3,9100
<b>GARMENT TRIMS</b>			EUR					
1TGBEL-MAX00002 - MAXIMA-TASSEL BELT	1,1590	0,9500	EUR	1,03	Piece	3,00	1,1938	0,9785
1TGFA5-BERRV001 - BERNING-NIK 1594 U0651	0,4026	0,3300	EUR	1,03	Piece	3,00	0,4147	0,3399
1TGINS-FRU0001 - FREUDENBERG-635/1000	1,5250	1,2500	EUR	0,06	Meter	3,00	0,0915	0,0750
1TGLAB-AVEW003 - AVENUE DATA-WOOLYC	0,9610	0,0900	EUR	1,03	Piece	3,00	0,0628	0,0515
<b>SEWING COST</b>			EUR					
- Sewing Cost	1,4640	1,2000	EUR	1,00	Piece	0	1,4640	1,2000
<b>PACKAGE COST</b>			EUR					
- Package Cost	0,1098	0,0900	EUR	1,00	Piece	0	0,1098	0,0900
<b>QUALITY CONTROL COST</b>			EUR					
- Quality Control Cost	0,0976	0,0800	EUR	1,00	Piece	0	0,0976	0,0800
<b>IRONING COST</b>			EUR					
- Ironing Cost	0,0976	0,0800	EUR	1,00	Piece	0	0,0976	0,0800
<b>***** TOTAL *****</b>			EUR					
<b>GENERAL EXPENSES COST</b>			EUR					
***** SUBTOTAL *****			EUR				8,7120	7,1400
<b>GENERAL TOTAL</b>			EUR				8,7120	7,1400
<b>TOTAL COST</b>			EUR				8,7120	7,1409
<b>MANLOSS %5</b>			EUR				0,4356	0,3570
<b>PROF %20</b>			EUR				1,8300	1,5000
<b>COMMISSION %4</b>			EUR				0,4574	0,3749
<b>CALCULATED PRICE</b>			EUR				11,4350	9,3729
<b>SALES PRICE</b>			EUR				12,2000	10,0000
<b>Foreign Exch. Rate EUR</b>							1,22	

## Order Follow up

It is possible to follow up all stages of manufacturing via the functional order screens of the SentezVogue.



Sorted or non-sorted, you may execute order form entry and follow-up operations based on color and size. As color and size names are parametric (such as fabric color, rib color, button color and S, M, L, XL or 32, 34, 36, 38, etc.), you are free to define them in 8 different colors and 40 different sizes.

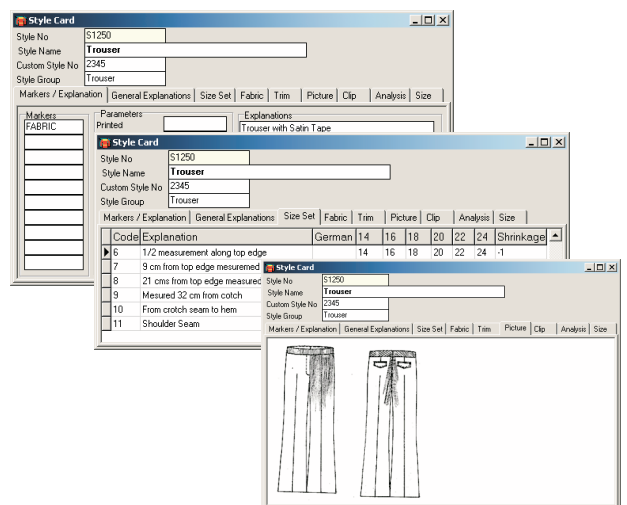
EXAMPLE COMPANY 31 December 2003 Wednesday 15:35:03 Page: 1

**ORDER FORM**

Delivery Date	Order No	Customer	Style Code	Style Name	Unit Price	S.P.	Amount	F.Exc.
25/11/2003	01BER1205	SF-1-01-BER-001	S1205	Shirt	7,0000	15,242	106,694,00	EUR
29/11/2004	01ADI4002	SF-1-01-ADI-001	S4002	Shirt	9,0000	8,665	77,985,00	EUR
10/01/2004	02GUH3000	SF-1-01-GUH-001	S3000	Sweat Shirt	6,0000	19,533	117,198,00	EUR
11/01/2004	01TOM1250	SF-1-01-TOM-001	S1250	Trousers	14,0000	35,496	496,944,00	EUR
<b>TOTAL</b>	<b>4 Order</b>					<b>80,066</b>	<b>798,821,00</b>	<b>EUR</b>

By use of the parametric explanation fields concerning the order, unlimited number of explanations can be defined.

Moreover, multi-style (set) orders can be defined.



It is also possible to define an unlimited number of color-variant. You may generate your own color cards automatically.

Any technical and detailed information concerning the order can be entered. You not only can execute financial details, general information and approval management, but also can obtain various lists and reports concerning the order.

History of the shipped orders can be kept.

By order/style and windows copy feature, it is possible to work very quickly on the repeat orders and styles.

### Model Follow Up

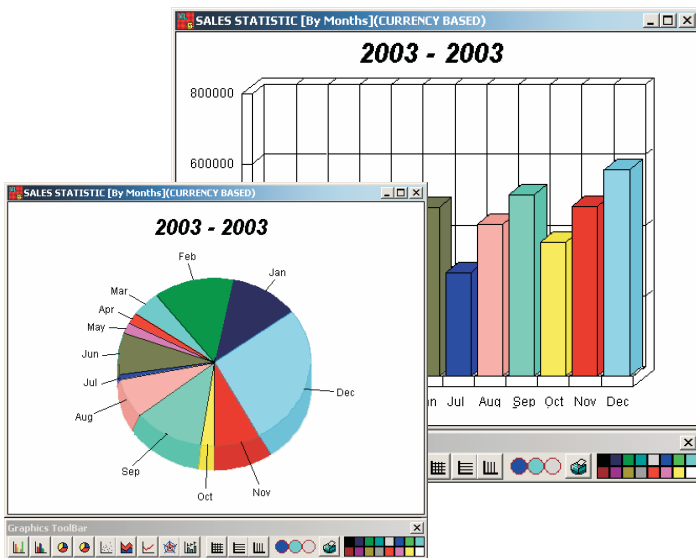
You not only can open style cards for all styles but also can archive all relevant images (picture, photography, clip etc.) and details concerning the style.

Unlimited explanations such as technical details of the model and its style, size, face details, sewing instructions etc. can be entered.

You may follow up the sample style and collection studies.

It is also possible to follow up the sales amounts and prices on reports and charts per orders, styles, customers and dates.

Furthermore, statistical tables and charts are available in foreign exchanges (EUR, \$, TL, etc.), pieces, years and customers.



## Planning

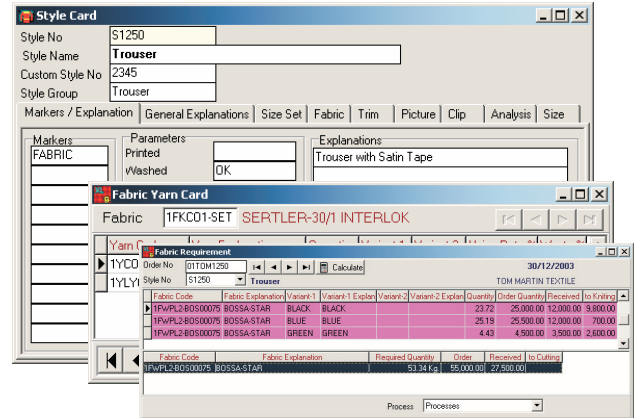
It is possible to execute very detailed requirement and time planning of each order within SentezVogue.

### Material Resource Planning

You can execute automatic calculations of yarn, fabric, trim and subsidiary materials based on the style for the order, and the procurement process can be followed up in full detail.

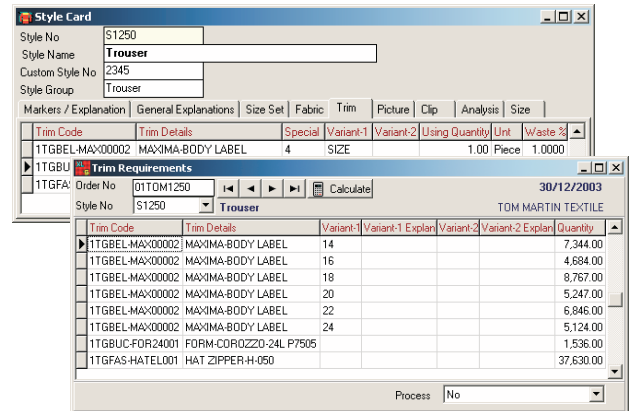
You may define fabric, trim and yarn recipe for each style.

Fabric, trim and yarn requirements are calculated automatically according to the color/size variants of the order.



It is possible to follow up all operations that are defined in the context of order/style based on the variants (color/size) at the procurement form.

Moreover, you can follow up the histories of all operations (purchasing order, purchase dispatch, etc.) in detail.



Manufacturing programs (fabric, knitting, dyeing, cutting etc.) can be prepared automatically.

You not only can prepare cumulative requirement lists for the group orders but also can get reports for inventory status comparisons.

### Time Planning

Time plan of the operations, with which the order will be processed, is executed for each order. Planning and follow up operations can be realized per operation, capacity, date and similar variants.

Daily list of operations for each order can be obtained.

Operations between certain dates can be followed up on the basis of orders.

Differences and deviations between theory and reality can be determined by comparisons between planned and realized dates.

Operation Type	Start	Finish	Real	Quantity	Unit Price
Fabric Purchasing	31/12/2003	31/12/2003	01/01/2004	350.00	0.04
Trim Purchasing	01/01/2004	02/01/2004	02/01/2004	3,000.00	0.42
Cutting	31/12/2003	01/01/2004	01/01/2004	4,500.00	1.23
Seaming	03/01/2004	05/01/2004	06/01/2004	3,200.00	0.35
Quality Control	06/01/2004	07/01/2004	07/01/2004	4,300.00	0.38
Packaging	08/01/2004	08/01/2004	09/01/2004	5,200.00	0.45
Shipment	10/01/2004	10/01/2004	10/01/2004	3,400.00	0.50

## Purchasing

It is possible to follow up fabric, yarn, trim and product purchasing orders.

Integration provides order form of your determined requirements to be prepared automatically, and also order receipt documents can be obtained.

Inventory Code	Variant	Order Quantity	F. Exc.	F. Exc. Price	Unit Price	Delivery Date	Received/Delivery	VAT %	Amount
1FKC01-SETA0513	BROWN	100.00	EUR	1.30	1.59	08/12/2003	0.00	18.00	159.00
1FWC00-MOR00001	GREY	500					0.00	18.00	895.00
1FWL1-BERA00026	RED	250					0.00	18.00	1,052.50
1TGFAS-BERJB017	BLACK	400					0.00	18.00	40.00

## Inventory Control

Inventory cards are defined in an alphanumeric structure. It is possible to assign a main code of 15 characters and two different variant codes of 10 characters.

Automatic generation of color-size variants as a consequence of the inventory processes ensures the execution of detailed card operations.

Inflow/outflow of fabric, trim, yarn, product and all finishing operations can be followed up.

By executing the follow up of contractor operations with work orders, reports can be obtained on the basis of work orders.

In addition, reserved and free inventory follow up can be executed via the use of allocation operations.

Order-style-inventory connection can be realized.

Inventory Code	Variant	Prof. Quantity	Gross Quantity	Net Quantity	Allocated Quantity	F. Exc.	F. Exc. Price	Unit Price	VAT %	Amount
1FKC01-SETA0513										
1FKC01-SETA0514	BLACK									
1FKC01-SETA0514	GREEN									

You may have standard inventory reports such as value, status, abstract, cost etc.

By means of the inventory report generator, unlimited number of reports can be generated special to the enterprise and the personnel.

Moreover, automatic receipt can be generated and dispatch document can be obtained in the required format.

Order receipt not only can be designed as required but also can be sent to printer, fax and e-mail directly.

Knitting, dyeing and printing programs can be prepared.

Pending-realized order dispersion can be followed up based on inventory and current accounts.

Price and delivery control can be executed on the purchasing orders.

## Manufacturing Follow Up (Before Cutting) Knitting

Before cutting fabric formation of the firms that work on knitted fabric can be followed up.

Internal and external knitting operations can be followed up per work order.

You can follow up partial and general yarn processes of knitting on both cumulative and detailed basis.

Follow up of the contractors with work orders can be executed. It is possible to obtain cumulative and detailed reports per work order.

Detailed reports can be prepared by following up "to knitting", "from knitting", "return" and "waste" rates. It is also possible to follow up the remaining yarn "at knitting".

You may determine the wastes per work order.

Receipt Date	Receipt No	Receipt Type	Inventory Code	Inventory Explanation	Variant	Variant 2	Sent	Received Gross	Received Net	Unit Price
24/12/2003	7 01	Product Purchase Delivery	1FK001-SETA0513	SERTILER-30V1 INTERLOK			0.00	0.00	3,000.00	265
24/12/2003	7 01	Product Purchase Delivery	1FK001-SETA0514	SERTILER-9*120CM RIBANA BLACK			0.00	0.00	600.00	114
24/12/2003	7 01	Product Purchase Delivery	1FK001-SETA0514	SERTILER-9*120CM RIBANA GREEN			0.00	0.00	300.00	114
02/01/2004	3 42	Sent(Dyeing)	1FK001-SETA0513	SERTILER-30V1 INTERLOK	BLUE		3,000.00	0.00	0.00	195
02/01/2004	3 42	Sent(Dyeing)	1FK001-SETA0514	SERTILER-9*120CM RIBANA BLACK			600.00	0.00	0.00	180
02/01/2004	3 42	Sent(Dyeing)	1FK001-SETA0514	SERTILER-9*120CM RIBANA GREEN			300.00	0.00	0.00	180
04/01/2004	3 11	Received(Dyeing)	1FK001-SETA0513	SERTILER-30V1 INTERLOK	BLUE		0.00	2,998.00	2,998.00	2.00
04/01/2004	3 11	Received(Dyeing)	1FK001-SETA0514	SERTILER-9*120CM RIBANA BLACK			0.00	600.00	600.00	1.93
04/01/2004	3 11	Received(Dyeing)	1FK001-SETA0514	SERTILER-9*120CM RIBANA GREEN			0.00	294.00	294.00	1.93
05/01/2004	2 43	Sent to Print	1FK001-SETA0513	SERTILER-30V1 INTERLOK	BLUE		2,000.00	0.00	0.00	2.20
05/01/2004	2 12	Received(Printing)	1FK001-SETA0513	SERTILER-30V1 INTERLOK	BLUE		0.00	1,998.00	1,998.00	2.20

### Dyeing-Printing and etc.

You may prepare dyeing-printing programs. It is also possible to prepare automatic instructions on the basis of fabric, color, color/order.

Manufacturing wastes can be calculated by entering gross and net quantities that were received from the contractors.

Fabrics sent to dyeing can be followed up on the basis of sent, received, return, waste and remaining.

Fabric Type	Requirement Unit	Unit	Purchase	Received	From Dyn	Sent	Received	Stamp	Sent	Received	to Cut
01110000	01BER1005	SP-141-BER001	S1005	Shirt							0
1FW001-AN0009	AN0009	VELLUTO	20,171.24	Meter	REALTEKS	20,300	5,300				0
01110000	01BER002	SP-141-BER001	S1002	Shirt							0
1FW001-AN0005	AN0108	SP-141-BER001	13,051.23	Meter	BENEME	13,300	15,700				0
01120000	00OUR000	SP-141-BER001	S001	Sweat Shirt							0
1FK001-SETA0513	SERTILER-30V1 INTERLOK		4,873.41	Piece	REALTEKS	5,000	3,000	GELISM	2,200	2,000	BOB DRY
1FK001-SETA0514	SERTILER-9*120CM RIBANA		4,861.46	Piece	REALTEKS	900	900				
01120000	01BER1006	SP-141-BER001	S1006	Shirt							0
1FW001-AN0009	AN0009	VELLUTO	126.00	Meter	RENTEKS	128					0
01120000	0025003	SP-240-BER	S1250	Trouser							0
1FW001-AN0007	AN0007	BOSSA-STAR	1,48	Kg	RENTEKS	1,488					0
01120000	01TOM1250	SFR-141-TOM001	S1250	Trouser							0
1FW001-AN0007	AN0007	BOSSA-STAR	55.33	Kg	RENTEKS	55,000	27,500				0
TOTAL (6 order)											

Inventory control on the basis of the contractors can be executed.

Stage of the operations such as dyeing and printing can be followed up per order.

It is also possible to follow up the additional operations (raising, decatizing) to be applied to the fabric.

### Cutting

Pieces to be cut are calculated automatically on the basis of color-size according to the determined cutting extra rate.

Cutting work order form can be organized.

You may follow up the cutting dates, marker details, wastes and cutting pieces of the received fabrics easily and reliably.

Cutting inflow and follow up can be executed on the basis of orders, colors, sizes, dates and cutters.

Fabric C.	14	16	18	20	22	24	TOTAL
BLACK	2,609	1,780	4,200	3,200	1,750	2,250	15,789
BLACK	2,766	1,887	4,452	3,392	1,855	2,385	16,737
	1,010	1,295	1,300	1,025	1,800	530	(220) 6,960
BLUE	1,430	2,359	3,000	1,300	4,400	2,302	16,791

Date	Explanation	Average	14	16	18	20	22	24	Total	
02/01/2004			220,000	450	545	700	325	1,200	330	3,550
02/01/2004			220,000	580	750	600	700	600	200	3,410

Moreover, cutting inflows-outflows can be followed up per color and size, order and style.

Statistics and charts can be displayed per cutting house, order, date and cutter.

### Manufacturing Follow up (After Cutting)

By means of the parametric structure of SentezVogue, you may define 20 variable piecework such as piece printing, embroidery, sewing, buttonhole-buttonwashing, last ironing, quality control etc.

All internal and contractor operations can be followed up on the basis of orders, styles, colors, sizes, pieces, producers and dates.

It is also possible to follow up operations such as washing and piece printing on the basis of kgs. and quantities.

Production Code	Production Name	Date	Work order No	Dispatch No	14	16	18	20	22	24	Total	Waste	Loss	Weight	Explanation
SM-134-ADA-001	ADALI TEXTILE	25/12/2003	1	1234	1,010	1,295	1,300	1,025	1,800	530	6,960	0.00			
SM-134-ADA-001	ADALI TEXTILE	27/12/2003	2	002	90	70	40	70	45	3	278	0.00	1.29	0.00	
SM-134-ADA-001	ADALI TEXTILE	27/12/2003	3	003	10	3	5	4	1	23	2	0.00	1.29	0.00	

Cutting Date	Order No	Style No	Color	Explanation	Cutter	S.P.	Cutted	Received	Waste	Loss	Remaining	Prod	Product	
10/10/2003	01BER1005	S1005	Shirt	BERGAN TEXTILE		15,240	15,003	15,047	15,000	2	7	3	117	ADAM
22/11/2003	01AD4002	S4002	Shirt	ADIDAS TEXTILE		8,665	8,800	8,800	8,798					YAMAN
07/12/2003	02GUR000	S0000	Sweat Shirt	GURAY TEXTILE		15,533	13,200	13,200	13,204	10	5	1	25	ADALI
24/12/2003	01BER1005	S1005	Shirt	BERGAN TEXTILE		40	900	95						ADALI
30/12/2003	01TOM1250	S1250	Trouser	TOM MARTIN TEXTILE		35,668	16,728	16,728	16,730	4	1	1	25	ADALI

### Piece printing, Embroidery, Sewing, Last Ironing etc.

By use of SentezVogue, sewing operation can be followed up per order, style, color, size, piece, producer and date. Moreover, related charts and detailed reports of this operation can be obtained.

Trim included dispatch can be written automatically for the goods sent to any piecework.

You may separate the goods received from sewing as sound, second quality, defective, damaged, etc. according to their quality.

Producer current accounts can be kept based on styles and quantities.

You may have daily activity and producer reports.

Producer trim balance reports can also be obtained.

You can follow up the contractor price agreements.

Losses and wastes can be seen per order, style and producer.

### Shipment

You may prepare the packing list either automatically or manually.

You may execute partial shipment.

Detailed and cumulative packing lists can be obtained. Packing list form can be prepared as required.

Box labels can also be designed as required and you can get their documents.

Shipment reports and charts can be obtained as daily, weekly, monthly and between the required dates.

You may execute shipping planning.

Packing lists can be prepared and their documents can be taken in, English, German, Turkish or in any other language.

You may define parametric fields such as transporter, invoice number and etc. in the packing list.

### Cost

You can automatically calculate the actual cost. Order cost can automatically be calculated by means of the allocations and the order operations.

Income-expense and profit-loss analysis can be executed.

You may get initial and actual cost tables comparatively for the orders.

Cost reports can both be displayed in foreign exchange types.

Sales statistics can be obtained in three different charts per customer, inventory and month.

EXAMPLE COMPANY

12 January 2004 Monday 11:01:18  
Page: 1

**MANUFACTURING FOLLOW UP REPORT**

Delivery Date	Order No	Customer Name	Style No	Order Quantity	Cutting Pieces	SEWING	Contractor Sent	Received Sound	Total Received	Contractor Price	WASHED	Contractor Sent	Received Sound	Total Received	Contractor Price	PRINTING	Contractor Sent	Received Sound	Total Received	Contractor Price
10/11/2003	01BER1205	BERDAN TEXTILE	S1205	20,000	15,032	AKDEN	15,047	14,730	15,030	1,17		7,000	6,985	7,000	1,18		0	0	0	0
					15,032		15,047	14,730	15,030			7,000	6,985	7,000			0	0	0	
10/11/2003	01ADI4002	ADDAS TEXTILE	S4002	10,000	8,800	YAMAN	8,800	8,732	8,798	1,15		4,000	4,000	4,000	1,17		0	0	0	0
					8,800		8,800	8,732	8,798			4,000	4,000	4,000			0	0	0	
01/12/2003	02GUR3000	GURAY TEXTILE	S3000	10,000	13,220	ADALI	13,220	13,122	13,204	1,25		0	0	0	0	CANBEY	7,000	6,985	6,985	1,05
					13,220		13,220	13,122	13,204			0	0	0			7,000	6,985	6,985	
14/12/2003	01BER1205	BERDAN TEXTILE	S1205	1,000	1,000	YAMAN	500	485	485	1,23		0	0	0	0	GELISIM	225	220	225	1,10
					1,000		500	485	485			0	0	0			225	220	225	
17/12/2003	02DER03	DERMAN TEXTILE	S1250	500	500		0	0	0	0	SELIM	500	500	500	1,20	AKDEN	500	500	500	1,08
					500		0	0	0			500	500	500			500	500	500	
30/12/2003	01TOM1250	TOM MARTIN TEXTILE	S1250	0	32,550	ADALI	16,735	16,339	16,730	1,29	YAMAN	16,730	16,727	16,727	1,20	GELISIM	16,727	16,727	16,727	1,10
					32,550		16,735	16,339	16,730			16,730	16,727	16,727			16,727	16,727	16,727	
					71,102		54,302	53,408	54,247			28,230	28,212	28,227			24,452	24,432	24,437	

Leftover goods (revaluation) can be calculated as the cost, at a certain price.

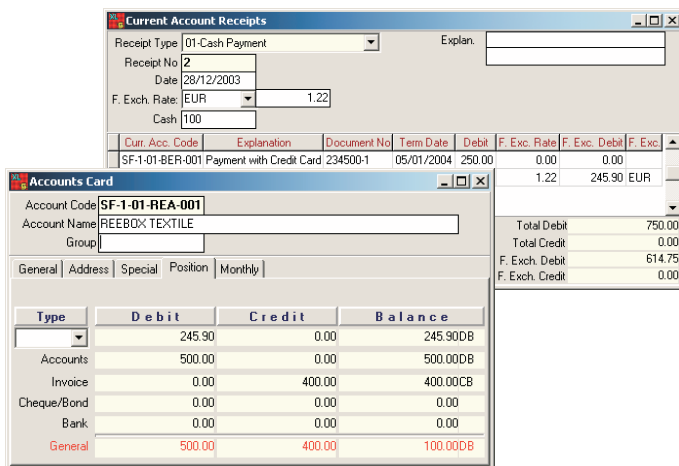
You may distribute the expenses (workmanship, electricity, rent etc.) cumulatively on the basis of the orders.

It is possible to execute constant and general expense definitions on the basis of the orders.

### Current Account

This is the module that ensures the regular follow up of customer and supplier accounts. It works integrated with SentezEXCELLENT.

You may open detailed current account cards concerning customers, suppliers and contractors and define the required information for accounting integration on these cards.



You can get 12 months account summary for each current account. Via the limitations that you will set with the filtering system, detailed card reports can be obtained based on the debtors, the creditors and the balance lists between certain dates.

You may also get receipt reports such as current account transactions, current account abstract, debtors-creditors lists and etc.

Producer (contractor) processes can be followed up per quantity and the amount.

It is also possible to follow up all current accounts on the basis of orders, inventories and styles, and establish automatic integration.

### Report Generator

By means of the report generator module of the SentezVogue, unlimited number of reports for the whole manufacturing process can be obtained special to the person and the enterprise.

Formula fields can be defined.

Every required detail can be transferred into the reports via the logic fields.

All reports can be sent to the screen, files, printer, fax, e-mail and MS Excel.

You may name the reports and authorize for each user.

### Form Generator

By means of the form generator module, unlimited number of forms can be obtained special to the person and the enterprise.

Formula fields can be defined.

All forms can be sent to the screen, files, printer, fax, e-mail and MS Excel.

You may design all dispatches and forms by yourself.

### Integration

SentezVogue can be used with online integration to SentezFabric (SentezYarn, SentezKnit, SentezWeave, SentezDye), SentezExcellent, SentezExpo and SentezPerformance.

SentezExcellent is a software that ensures to keep the financial transactions and legally obligatory registers of your firm. It is used by the accounting and personnel departments.

SentezExpo executes the follow-up of the operations in relation to Exports, Imports, Inducements and credits. (It involves the Customs Union (Tariff) legislation.)

On the other hand, SentezPerformans is a manufacturing follow-up system that works Real-Time and Interactive. Productivity evaluation is calculated mathematically on the basis of the enterprise and the personnel. Data entry can automatically be executed via barcode.

EXAMPLE COMPANY													12 January 2004 Monday 14:18:41		
COMPARATIVE COST LIST													Page: 1		
Ship.Date	Delivery Date	Order No	Customer	Style Code	Style Name	Unit Price	Order Piece	Ship.Piece	Sales Amount	Initial Cost	Real Cost	F.Exc.	PROF %		
25/11/2003	10/11/2003	01BER1205	SF-1-01-BER-001	S1205	Shirt	7.00	15,242	15,242	106,694.00	0	74,475.41	EUR	32,218.59 43		
30/11/2003	10/11/2003	01ADI4002	SF-1-01-ADH-001	S4002	Shirt	11.00	8,665	8,665	95,315.00	0	59,143.21	STR	36,171.79 61		
30/12/2003	14/12/2003	01BER1205	SF-1-01-BER-001	S1205	Shirt	8.00	110	110	880.00	0	710.96	EUR	169.04 24		
31/12/2003	17/12/2003	02DER03	SF-2-03-DER	S1250	Trouser	10.00	1,000	1,000	10,000.00	0	6,010.10	STR	3,989.90 66		
08/01/2004	01/12/2003	02GUR3000	SF-1-01-GUR-001	S3000	Sweat Shirt	6.00	19,533	19,533	117,198.00	0	67,293.14	EUR	49,904.86 74		
10/01/2004	30/12/2003	01TOM1250	SF-1-01-TOM-001	S1250	Trouser	14.00	35,496	35,496	496,944.00	252,376.56	360,040.08	EUR	136,903.92 38		
<b>TOTAL</b>		<b>6 Order</b>					<b>80,046</b>	<b>80,046</b>	<b>721,716.00</b>	<b>252,376.56</b>	<b>502,519.59</b>	<b>EUR</b>	<b>219,196.41 44</b>		
									<b>105,315.00</b>	<b>0</b>	<b>65,153.31</b>	<b>STR</b>	<b>40,161.69 62</b>		

# TEXTILE ERP SOLUTIONS

## Sentez**FABRIC**

Integrated Fabric Manufacturing Management System



### Sentez**YARN**

Yarn Manufacturing Follow up System



### Sentez**WEAVE**

Weaving Manufacturing Follow up System



### Sentez**KNIT**

Fabric Manufacturing Follow up System



### Sentez**DYE**

Textile Finishing Follow up System



### Sentez**VOGUE**

Apparel Management System



### Sentez**EXCELLENT**

Management Information System



### Sentez**EXPO**

Foreign Trade Management System



### Sentez**POSitive**

Sales Management System



### Sentez**SHOP**

Sales Point Management