

sentez



Sales Point Management



Solution for Sales Points and Shop's in different sectors (like Ready-To-Wear, Shoe, White Goods, Furniture, Home Textile, Electronics, Book/CD, Optic / Watch, Toy, Building Material) to achieve perfect workflow in daily operations.

Department based sales operations, statistics with charts. Define one or more cashier on shift work basis, get cash reports. Realize automatic instalment sale. Group products and get group based statistics. Follow up on detailed customer informations with shopping statistics. Thanks to parametric structure, fit the needs of shops in different sectors.

Customer tracking during sales

Department and product based sales tracking

Salesclerk based sales and premium tracking

Realize sales by barcodes

Return and amend operations handling

Realize Color/Size Set based sales

Access to customer information during sales

Easy access to product information during sales

View product pictures during sales

Sentez SHOP 4.0

Customer: 08PM0007 Harry Winter

SN	QTY	Explanation	Amount
1	05	Amount Mens Shirt Classic Blue M	23.00
2	05	Mens Pant Cachet Brown 40	48.00
3	05	Mens Jacket in Full Dress Navy Blue 40	95.00

Total Amount: 166.00
Discount Amount: 0
Interim Payment: 0
Payable: 166.00

Salesclerk: 05 Sarah Jones

Code: ECA001 02-Navy Bln 03-4

Name: Mens Jac

Quantity: 1

Expl:

New Sales

Return

Color Size Set

Color	36	38	40	42	44
001-Yellow					
002-Navy Blue					
003-Green					
004-Blue					

Male Female Child

Mens Jacket	Piece	95.00	7	8	9
Mens Jacket Cachet	Piece	99.00	4	5	6
Men's Jacket Full Dress Single Vent	Piece	68.00	1	2	3
Men's Jacket Full Dress Double Vent	Piece	83.00	0	00	
Men's Jacket Sport Classic	Piece	85.00			
Men's Jacket Linen	Piece	185.00			
Men's Jacket Suede	Piece	155.00			

C O.K.

Harry Winter

Mens Jacket Full Dress

First-Last Visit: 20.10.2002 31.01.2003

Shoppings: 2

Product: 2

Total Amount: 84.00

Credit Limit: 950.00

STANDING CUSTOMER

08-Men's Department Warehouse

01 31. January. 2003, Fr.

Sales

Supports: Touchscreen and barcode reader as input device. Foreign currency.

Settings: Department, product, date/hour and customer based price/discount rate.

Tracking on: Shopping statistics and customer/products by their pictures. Customer orders/deliveries. Promotions, return procedures, amend vouchers. Department based sales/statistical reports. Sales by color/size set, cashier/salesperson by their premium.

Methods of Payment/Collection:

Cash (defined foreign currency), Credit Card (Master, Visa etc.), Credit Sales Card, Gift Voucher. Deposit on customer order.



Cash

Support: Cash opening and closing procedures. Cashflow management (bank, expense, advance on cost payments).

Settings: Define one or more cashier on shift work basis.

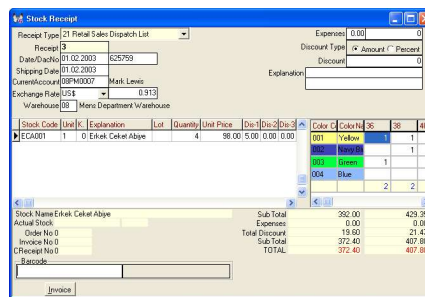
Tracking: Daily detailed or summarized (X or Z) cash reports. Upon request reports based on payment method, foreign currency, expenses and sales

dispersion. Money transfer between cash.

Credit/Instalment Sales

Support: Automatic instalment sales function. According to maturity schedule, combining of instalments or account based instalments. Billing during sales.

Settings: According to instalment sale, preparing/printing and tracking of individual contract/notes form and



account statement.

Tracking: Follow up unbilled dispatch lists, automatic billing of unbilled dispatch lists. Instalments in arrear are shown in different colors. Calculating of default interest. Reports based on; sales/stock, purchase, instalment, customer accounts/instalment statement. Lawyer and execution procedures.

Customer Relations Management (CRM)

Support: Congratulatory e-mail and SMS message sending to customers (Depending on ISP and Carrier).

Settings: VIP, black list, bail informations.

Tracking: Customer related informations (Birthday, wedding anniversary, shopping/payment statistics, tastes, complaints and wishes. VIP, black list

Inventory Management

Support: Integration of Tracker (handheld terminal). Printing of barcode stickers via Order/ Stock/Invoice Receipt entry. Automatic purchasing of products (below critical stock). Automatic generating of sales prices.

Settings: Detailed product/group (Season, brand, style) definition.

Tracking: Detailed product/group (Season, brand, style) statistic reports. Product follow up based on; color/size, critical/below critical, warehouse, shop and department/consignment stocks. Period, date, day/hour based product statistics. Stock inflow/outflow, return, amendment procedures. Follow up multiple warehouses.

Purchase Management

Support: Integration of Order/Shipping modules.

Tracking: Set/realized purchases. Detailed customer orders According to Order/Shipping integration, follow up on open/closed orders. Compare purchase and customer orders with assets (as report).

Current Accounts Management

Support: Address list and label printing. Data entry based on customer transactions (in TL or foreign currency)

Tracking: Upon request listing of all transactions as report. Balance sheets based on current accounts (in TL or foreign currency).